

# Period Embossed Victorian Tiles



H&E SMITH



# About H&E Smith

Specialist Tile Manufacturers and  
Distributors Since 1926



Our **Period Embossed Tiles** and **Eco-Glazed Brick Slips**, all made on site, are our most popular selling lines, often used to create feature walls in bars, restaurants and retail outlets.

Our experience with the bespoke manufacture of ceramics has greatly enhanced our ability to be able to work closely and effectively with architects, designers and specifiers.

This has culminated in our large collection of clients that we now supply throughout the world, both in the fashion and hospitality sectors.

Our knowledge of the market has enabled us to expand our product offer, incorporating the latest ink-jet digital technology, innovative new materials in extra large formats and vast colour palettes, all available to the client in one easy process.

As designers and creators of ceramics, we are passionate to explore new horizons with materials, colours and textures. These are reflected in our comprehensive product ranges.

Samples can be ordered through our **website** and dispatched within hours.



# Period Tiles



During the Victorian era there was a tremendous resurgence of interest in the use of tiles for all kinds of projects.

Two principal design movements contributed to that increase in interest, the Gothic Revival, and the Arts and Crafts Movement.

Individually patterned tiles, or tiles which could be laid together to form patterns, were now mechanically produced in volume.



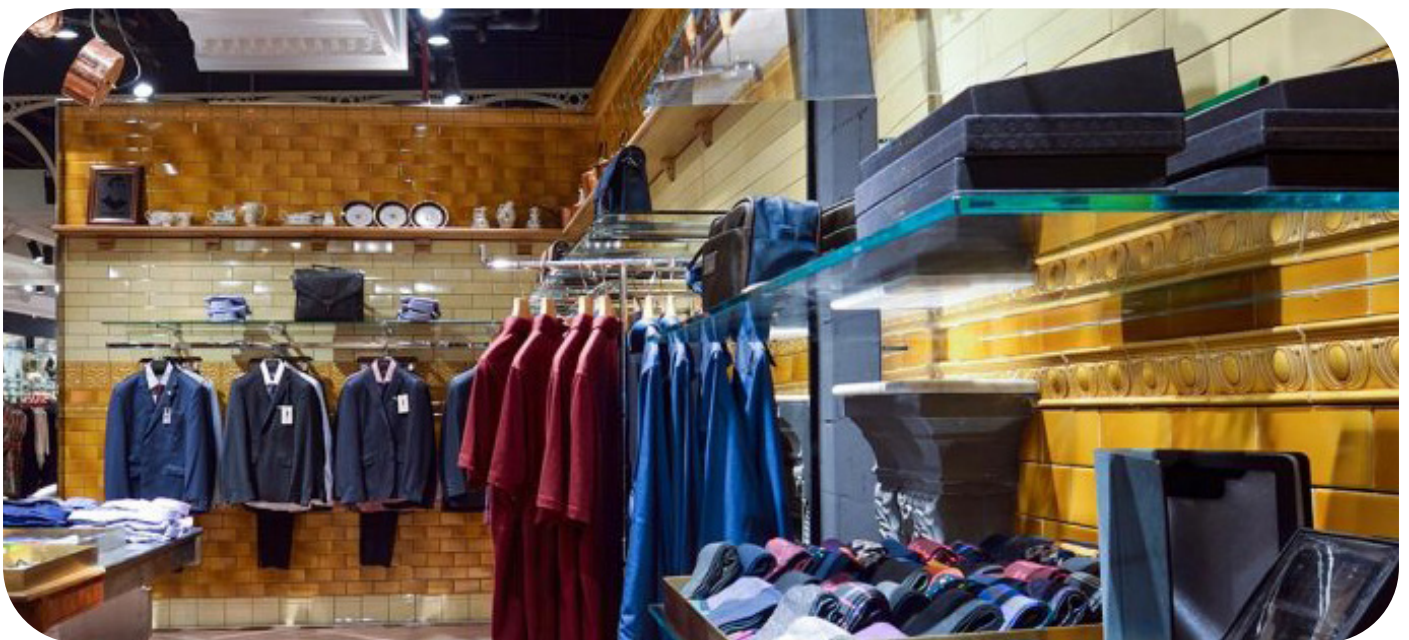


# Commercial Useage

*Need inspiration for your next project?*

When it comes to creating a high end, truly luxurious look and feel, many designers opt for our Period Embossed Victorian range of ceramic tiles.

From backdrops to expensive clothing, intimate booth areas in bars, and eye-catching pillars to the most opulent of bathrooms, you will certainly leave your clients with a renovation they want to shout about.



Plain tiles are used alongside embossed tiles with matching corners and mouldings to create a stunning raised effect that you'll just want to touch over and over and again!





# Bespoke Service

*Sometimes a project requires something special.*

Hawksmoor required bespoke tiles for a restaurant project. We consulted on the type, style, colour and pattern with them and helped make their restaurant interior project a success.



When it was time for CJC Design to choose tiles for the front of the bar for the 1871 Bar at the Royal Albert Hall, they spoke to our team. They were keen to ensure the tile shade fitted well with the rest of the design so asked us to produce Period Embossed tiles in a bespoke shade for this project.

Christian Louboutin wanted us to create a bespoke tile for them, incorporating their brand and initials. We consulted with them and delivered the completed tiles to their full satisfaction.





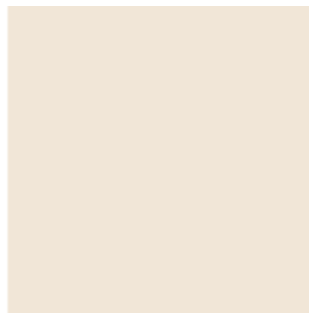
# Period Embossed Colours



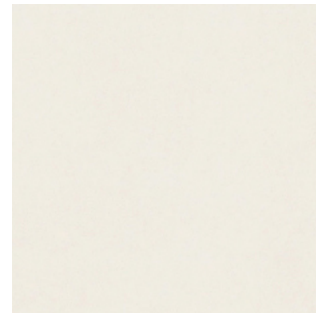
Magnolia



Primrose



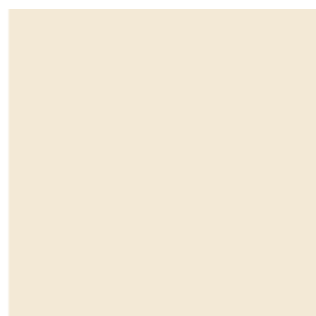
Polished White



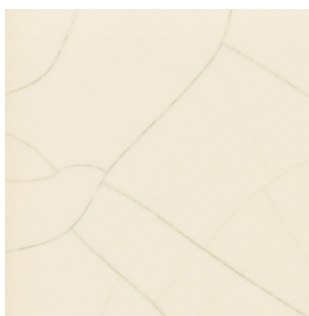
Snow Drop



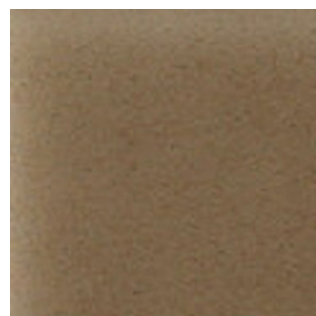
Crackle Snow Drop



Off White



Crackle Off White



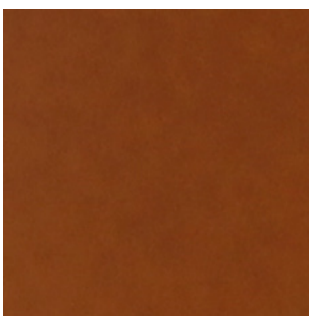
Mocha



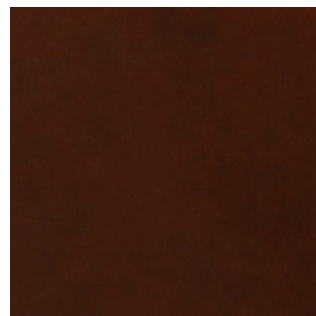
Inca Gold



Honey



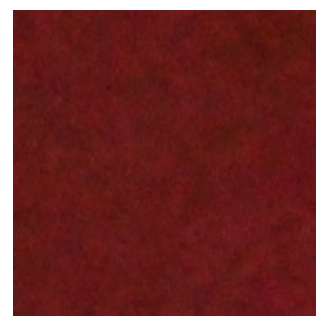
Victorian Brown



Tea Pot Brown

25 Standard colours are available, however almost any colour from the RAL selector or Pantone colour finder can be applied if required.

\* Please note that not all tiles are available in every colour



Burgundy



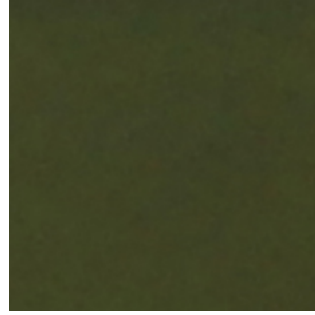
# Period Embossed Colours



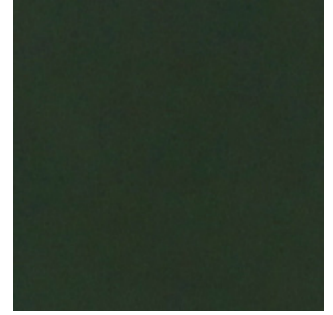
Apple



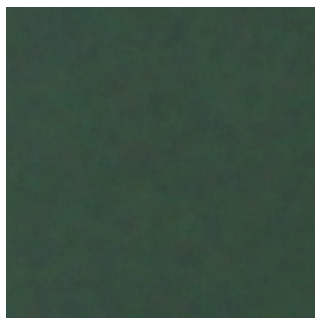
Celadon



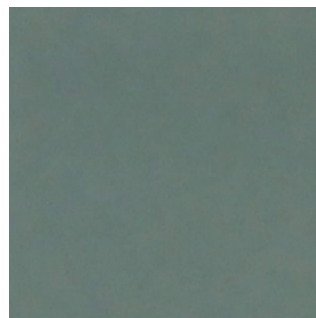
Jade



Victorian Green



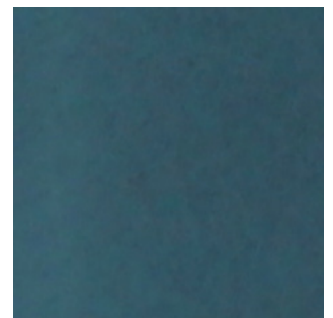
Teal



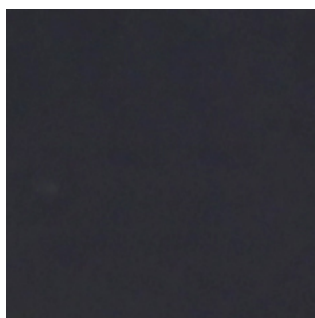
Periwinkle



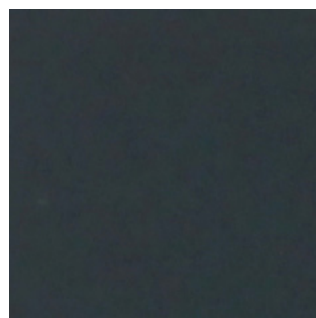
Moonstone



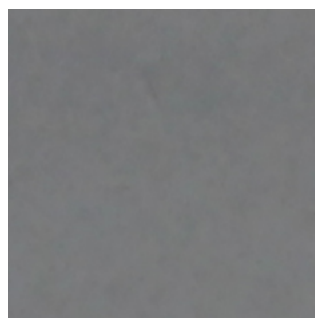
Bluebell



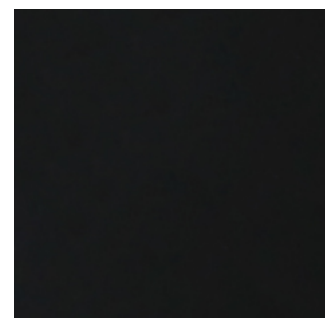
Cobalt



Midnight Blue



Victorian Grey



Victorian Black

Please note that these colour swatches may vary in colour depending on light and your PC display settings. Crackle designs have a pigment applied to highlight the crackle effect. For a true representation of colour, please order a sample.



# Period Embossed Designs

28  
Designs

Period Embossed range of tile, cornice and moulding designs



Floral 9"X6"



Pomegranate 9"X6"



Imperial 6"X6"



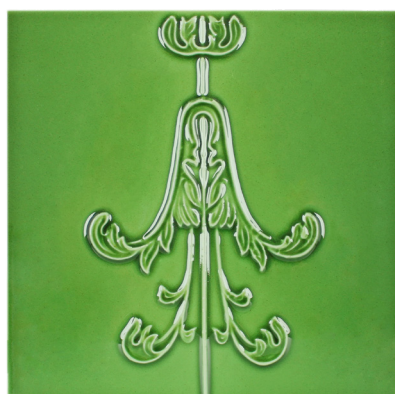
Medalion 6"X6"



Royal Windsor Quarter 6"X6"



Minor Pendant 6"X6"



Minor Pendant Dropper 6"X6"



Garland Border 6"X6"



Thistle 6"X3"



Leaf 6"X3"



Rosette  
Border  
6"X4"





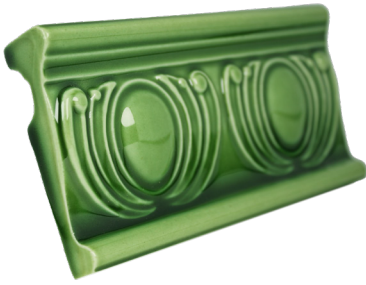
Dentil 8"



Cable 6"x1.5"



Crown 6"x1.5"



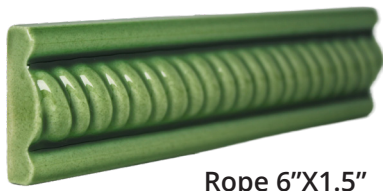
Royal Garland Dado 6"x3"



Wheat Sheaf 6"x3"



Classic Moulding 6"x3"



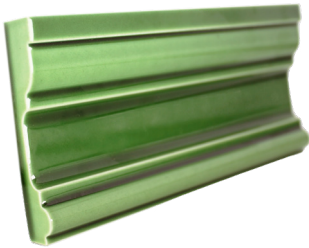
Rope 6"x1.5"



Lozenge 6"x1"



Georgian Dado 6"x3"



Edwardian Dado 6"x3"



Fluted Dado 9"x3"

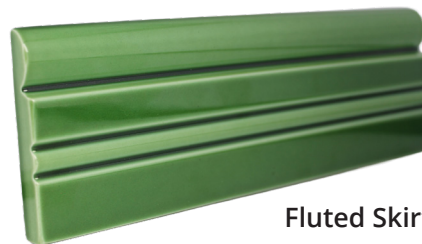


Dado 9"x2"



Plain

4"x4" / 6"x1" /  
6"x1.5" / 6"x2"  
6"x3" / 6"x6" /  
8"x4" 9"x3" / 9"x6"



Fluted Skirting 9"x3"



Metro  
75x75mm



Metro 150x75mm



Skirting 6"x6"

See next page for corners fittings.



# Period Embossed Corners

Available corner fittings



Skirting  
Corner  
6"



Straight  
Corner  
6"



Quad  
Corner  
6"



Fluted  
Dado  
Corner  
3"



Georgian  
Corner  
3"



Classic  
Corner  
3"



Fluted  
Skirting  
Dado  
Corner  
3"



Royal  
Garland  
Dado  
Corner  
3"



Leaf  
Corner  
3"



Thistle  
Corner  
3"



Cable  
Corner  
1.5"



Crown  
Corner  
1.5"



Quadrant  
Corner  
4.5"x3"

# Contact Us

Period Embossed Victorian tiles are a superb choice for creating distinctive internal feature walls and can also be used externally when frost treated.

We manufacture our tiles in a wide range of traditional colour options in order to meet the varying requirements of the designers and architects we frequently work with.



**Call:**  
[01782 281617](tel:01782281617)

**Email:**  
[sales@hesmith.co.uk](mailto:sales@hesmith.co.uk)

**Web:**  
[www.hesmith.co.uk](http://www.hesmith.co.uk)

If you are an architect or specifier working on a project, please contact us to request your free samples.





---

H&E SMITH

---

Specialist Tile Manufacturers  
& Distributors Since 1926

The beauty, grace and elegance of a traditionally crafted tile is an  
inspiration that helps create truly wonderful things.

[www.hesmith.co.uk](http://www.hesmith.co.uk)